

VISITOR GUIDE

VISIT
coolamon shire

COOLAMON

ARDLETHAN

GANMAIN

MARRAR

BECKOM

MATONG

WWW.VISITCOOLAMONSHIRE.COM.AU



Acknowledgement of Country

Coolamon Shire Council respectfully acknowledge the Wiradjuri people who are the Traditional Custodians and First Peoples of Coolamon Shire, and their continued connection to country and culture. We pay respect to Elders past and present.

Contents

WELCOME TO COOLAMON SHIRE	5
GETTING HERE	6
VISITOR INFORMATION	7
OUR TOWNS AND VILLAGES	8
SEE AND DO	10
EAT AND DRINK	24
CREATORS AND GROWERS	33
TIME TO SHOP	34
EVENTS	40
STAY A WHILE	44
CANOLA TRAIL	48
RIVERINA REGION	50
SERVICES	53



Photo Credit Nellie Whyman

Welcome to Coolamon Shire

CELEBRATING HISTORY, HERITAGE, ARTS, COMMUNITY AND THE GREAT OUTDOORS.

We invite you to join us in Coolamon Shire. This visitor guide will share with you some of the insights we have to offer. You'll find things to see and do, places to eat and where to stay. We are excited to show you around our wonderful area.

Coolamon Shire is located in the Riverina region of NSW, nestled amongst rich farming and grazing land.

The Wiradjuri people were the first to the region. Coolamon is named after the Wiradjuri word for a vessel for carrying goods, children and water – 'Gullaman'. Coolamon was established around the time the railway arrived in 1881, with the Shire being proclaimed on 3 March 1906.

Coolamon Shire is home to a population of 4368 across six towns and villages. Coolamon being the largest town, with smaller towns of Ardlethan and Ganmain and villages of Beckom, Marrar and Matong. The towns within the Shire are small, but boast a variety of places to stay, things to see and do and places to dine.

You'll find charming streetscapes, well preserved architecture, beautiful open spaces and a relaxed country atmosphere. Step back in time as you explore each town and its main street and discover some hidden treasures along the way.

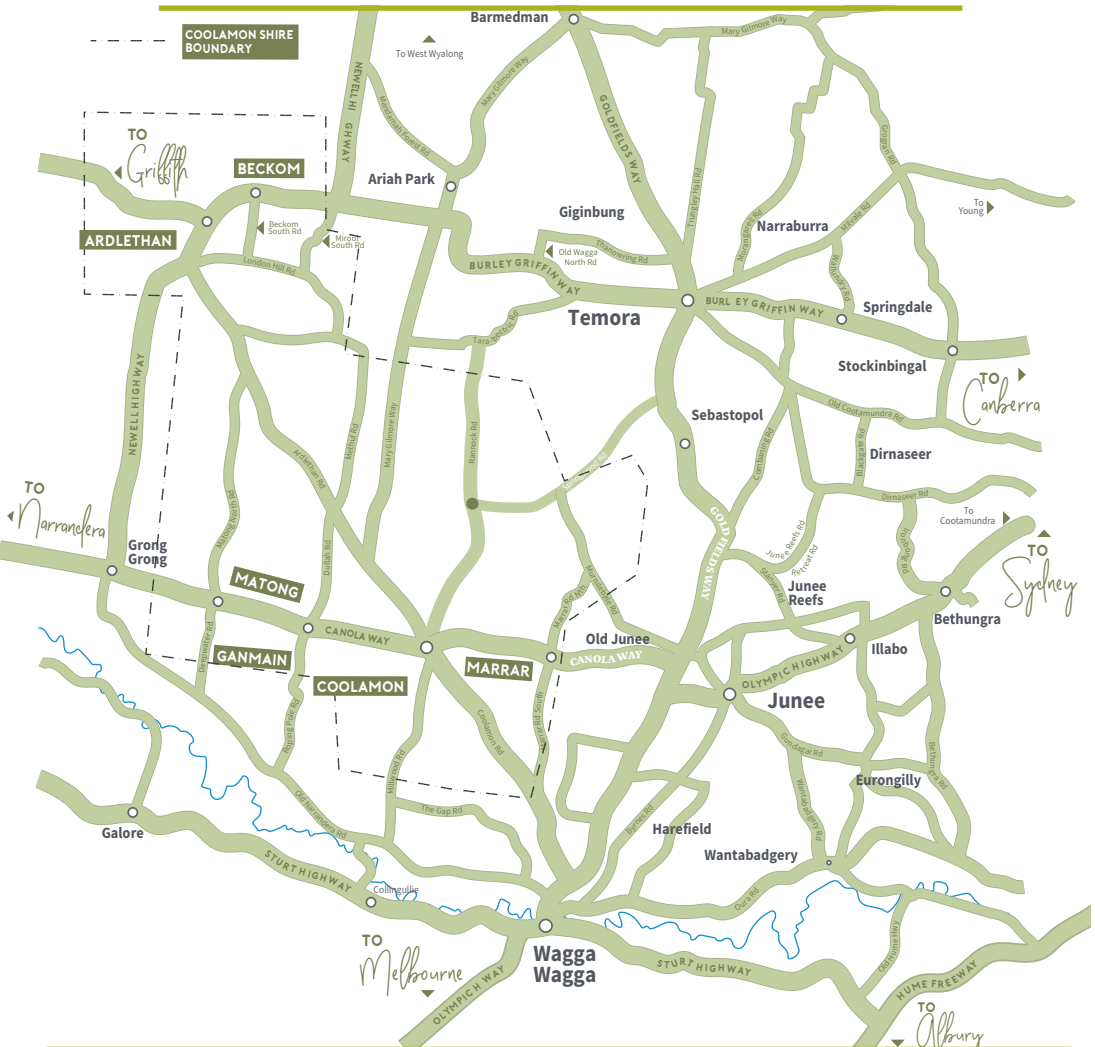
Ideally situated, Coolamon Shire is bound by the neighbouring Shires of Narrandera, Bland, Temora, Junee and the City of Wagga Wagga. Enjoying the best of both worlds – the friendly, relaxed atmosphere of rural living, and excellent services and facilities both within the Shire and in nearby areas.

Coolamon Shire is bursting with things to do. Just 40km from Wagga Wagga, Coolamon Shire is a great day trip destination or weekend escape. Cultural and heritage tourism experiences are abundant, with the area retaining many of its original buildings and streetscapes. Museums, natural attractions, boutique shopping and cafes can be experienced all year round, with an exciting events program that will draw you back again throughout the year.

Come and experience great country hospitality in the Coolamon Shire. Relax and unwind as you take in each town and village at your own pace.

Getting here

Coolamon Shire is located in the Riverina Region of NSW, just a short detour off the Olympic, Sturt or Newell Highways. Coolamon is approximately 480km from Melbourne, 470km from Sydney, 260km from Canberra and 40km from Wagga Wagga, Junee and Temora.





Visitor Information

THE VISITOR INFORMATION CENTRE IS LOCATED AT THE COOLAMON FIRE MUSEUM, CORNER OF COWABBIE AND LOUGHNAN STREETS COOLAMON.

OPEN FROM 10AM TO 4PM, 7 DAYS.

This is the perfect place to stop when you first arrive in Coolamon Shire, gather local knowledge on attractions, places to eat and places to stay.

To contact the Visitor Information Centre, you can phone the Fire Museum on 0419 090 504 or phone Coolamon Shire Council's Tourism team on 6930 1800.

You can also visit www.visitcoolamonshire.com.au
You'll also find Visit Coolamon Shire on

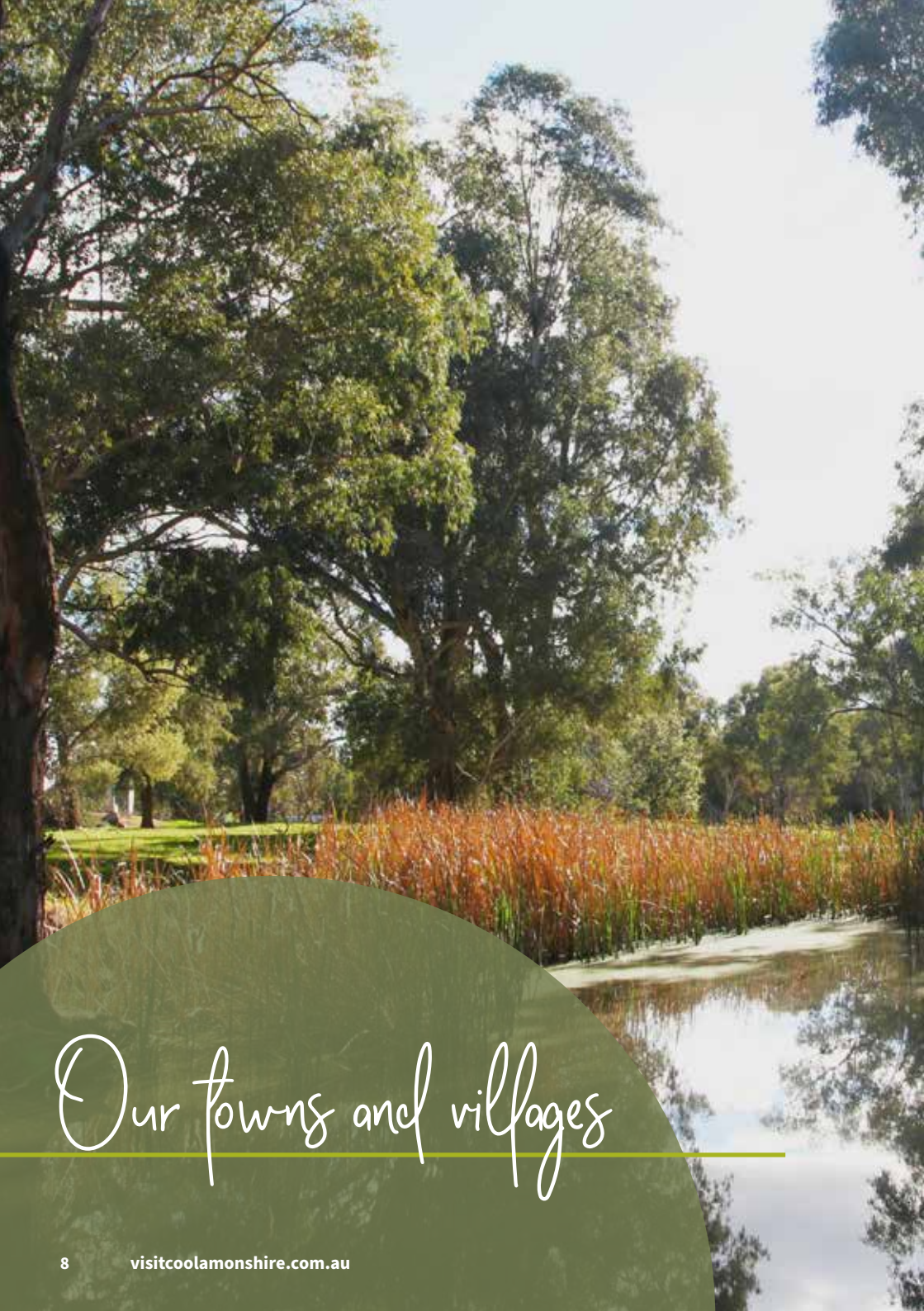
 Facebook

[@visitcoolamonshire](https://www.facebook.com/visitcoolamonshire)

 Instagram

[#visitcoolamonshire](https://www.instagram.com/visitcoolamonshire)

This guide is updated annually. Coolamon Shire Council has made every effort to ensure that all the information listed is correct at the time of printing.



Our towns and villages

COOLAMON

Just a short thirty-minute drive from Wagga Wagga and you'll find yourself in Coolamon, a country town full of history and heritage. Offering plenty to do, a place that's home to a variety of museums, attractions, eateries and boutiques that are loved by our locals and visitors. Take a wander and enjoy all that Coolamon has to offer.

Coolamon's wide heritage main street, Cowabbie Street, is lined with boutiques, charming country pubs and cafes with a well-manicured parkland running down the middle. You'll also discover many hidden gems off the main street that are definitely worth stopping for.

ARDLETHAN AND BECKOM

Enjoy a slower pace of life in Ardlethan, a place that exudes old-world charm and history. Just two minutes off the Newell Highway, visitors can enjoy a collection of little stores and eateries or opt for a picnic in the park which has BBQ facilities and playgrounds. Ardlethan makes the perfect rest spot for travellers, with a peaceful short-stay park for caravans and motorhomes.

Explore the town and it's surrounds by taking a nature or heritage walk to learn about Ardlethan's links to the Kelpie dog, view the Frank Bradley statue and the historic London Hotel.

Beckom is a charming village just down the road from Ardlethan on the Newell Highway. After a long drive there's nothing like settling in for a cool ale and yarn at the local pub. Located in an impressive heritage two-storey building. Greeted with friendly hospitality in a pub full of character.

GANMAIN

A short ten-minute drive from Coolamon and you'll find yourself in Ganmain. A town packed with character, culture and heritage. With attractions ranging from museums and craft shops to interpretive nature walks. Ganmain is small but offers plenty.

Discover the Ganmain Historical Society's impressive collection of items including vintage machinery and farming equipment. The Ganmain Haystack Museum is an open display that can be accessed at any time and includes footage of 'the haystack glory days'. You'll find yourself browsing many unique shops including craft shops, second-hand finds and boutique one-off pieces. Enjoy a famous Ganamin Pie from the bakery or delicious meals from cafes.

MARRAR

A small village full with rural charm and heritage. Renowned for its prime lambs, canola and cereal crops, Marrar has a rich agricultural history that remains largely unchanged. This village is an inviting rest stop with a quaint pub and picnic area at the local park where you can browse the 'Picture in the Past' photographic exhibition and enjoy a delightful lunch at the café.

MATONG

Matong is a small village which is a short drive from Ganmain. Matong offers an enjoyable rest spot with BBQ facilities, playgrounds and parklands. While many of the shop fronts are no longer in operation, it's worth a wander to view the heritage buildings and picture what once was.



See and do

IF YOU'RE LOOKING FOR A DAY OUT AND SOMETHING TO ENTERTAIN THE ENTIRE FAMILY, WE'VE GOT YOU COVERED. WANDER, EXPLORE AND DISCOVER A SHIRE FULL OF HISTORY AND HERITAGE.

Wander along the main streets to capture an array of heritage buildings and lovely park spaces. Main streets are carefully preserved, lined with heritage buildings, boutiques, country pubs, little cafes and local businesses. Step back in time as you discover our towns and villages and meet the friendly locals who call our wonderful Shire home.

Must-see attractions are showcased throughout the Coolamon Shire. Discover museums, taste local cheeses, explore bike and walking tracks, stop by the Kelpie Statue in Ardlethan and the informative Hay Display Centre in Ganmain. Coolamon Shire offers many surprises along the way.

Immerse yourself in local history, the perfect place to start is the State Heritage listed Up-to-Date Store in Coolamon. This beautiful building is an elegant and rare example of country general stores. The store is home to the original and operational gravity fed Lamson cash railway machine.



Photo Credit Mark Slater

ARDLETHAN Kelpie Statue

Ardlethan is recognised as the “Home of the Australian Kelpie” with a bronze statue in Stewart Park.

This great working dog is found all over the world, with bloodline going back to the efforts of largely one local man, North Bolero Station Manager Jack Gleeson. Little did Gleeson know that the otherwise unremarkable little dog would one day make Australian history as the founding member of a great breed.

The statue represents Gleeson’s dog Kelpie in a working stance, looking in the direction of her home. The ten tonne rock which it stands upon was found near ‘Bolero’. Further down Ardlethan’s main street, on Aria Street, you’ll also find a very different version of the Kelpie by impressive scrap metal artist Andrew Whitehead.

To read about the Kelpie story, please visit www.visitcoolamonshire.com.au





Photo Credit @singletrack_matt



BIKE AND WALKING *tracks*

TRAILS, TRACKS AND QUIET ROADS ARE WAITING FOR YOU TO EXPLORE. THERE ARE A RANGE OF TRACKS TO SUIT ALL LEVELS OF FITNESS AND EXPERIENCE, THERE IS SOMETHING FOR EVERYONE. TAKE IN THE SHIRE BY RIDING, WALKING OR RUNNING THE FOLLOWING TRACKS:

Kindra Forest Trail

This popular singletrack trail is perfect for all riders and walkers. Located in Coolamon's Kindra State Forest and includes 10km of trails that wind through bushland and forest. You can choose from three loops.

Gilgai Trail

Gilgai Trails utilises existing paths and streets in urban areas of both Coolamon and Ganmain. It's a 16km trail one way trip. If you're after a longer distance, it's a 32km return trip. You can start either in Coolamon or Ganmain and make your way along the trail.

Coolamon Urban Trail

This is an 8km trail around Coolamon. The trail passes around the outskirts of town through natural woodland, existing streets, paths and roads with the option for a detour into Kindra Forest trail or Gilgai trail to Ganmain for some extra kilometres.

Ganmain's Murumbang Interpretive Walk

This nature walk winds around the Ganmain Forest, railway dams and Boggy Creek.

For maps and more information, visit www.visitcoolamonshire.com.au

COOLAMON Cheese Co.

Coolamon Cheese Co. creates an innovative range of handcrafted cheeses, that are a sensual delight. Set in the architecturally stunning heritage Co-op building, which has been transformed to showcase a world of cheese. The cheese range currently includes soft white mould cheeses, blue vein cheeses, a range of Australian native flavoured cheese and Australia's first Lactose Free handmade cheeses.

Located at the front of this impressive building is 'The Bread & Cheese' Synergy Café Restaurant, offering a large menu of tasty items.

You can pick up cheeses made onsite from local Riverina milk, bread from Steve's Bakery as well as café and restaurant menu items and local produce.

To arrange a tour and group bookings, phone the Bread & Cheese:

0492 455 743
87 Cowabbie Street Coolamon

Wholesale Cheese Inquiry
02 6927 3757
info@coolamoncheese.com.au
www.coolamoncheese.com.au

Get social with the Coolamon Cheese Co via @coolamoncheese





COOLAMON Fire Museum

COLLECTOR AND EX-FIREFIGHTER, CHRIS BERRY, HAS GATHERED ITEMS FOR OVER THREE DECADES TO FORM AN IMPRESSIVE COLLECTION OF FIREFIGHTING MEMORABILIA.

It all started when Chris discovered an old brass firefighting helmet and now his collection includes thousands of items. Housed in the old Coolamon Fire Station, Chris tells his stories of brave firefighters and talks to visitors about the equipment used through the years.

Chris' favourite piece is the old Coolamon Fire Station bell which was taken down 40 years ago and after a two-year search, it was found in a local garage. It is now in its original position.

To arrange tour or group bookings, please phone Chris.

Free entry - Donations are welcomed
Cnr Cowabbie and Loughan Street,
Coolamon

Open 7 Days
10am to 4pm
Museum Manager, Chris Berry 0419 090 504

For more information, visit www.visitcoolamonshire.com.au

COOLAMON Kindra State Forest

The Kindra State Forest is made up of 52 hectares of natural bushland. Here you'll discover a large range of Australian wildlife and wild flowers. Over 100 bird species have been sighted in the Coolamon Shire, many of which can be found or viewed from the forest area.

The forest contains a range of bike and walking trails that will lead you on a journey of discovery. Ideal for those looking for adventure with tracks weaving

through bushland or a peaceful walk looking for wildlife and various native plants.

Located in the forest are seating and viewing areas, picnic spots and interpretative signage to help you discover the area.

Lewis Street North, Coolamon

Parking available at entrance and at the Coolamon Sport and Recreation Club.

For more information, visit www.visitcoolamonshire.com.au





Photo Credit Zane Fraser



COOLAMON UP-TO-DATE STORE *Cultural Precinct*

BUILT IN 1909, THIS STATE HERITAGE-LISTED BUILDING SHOWCASES IMPRESSIVE ARCHITECTURE WITH WIDE VERANDAHs. THIS BUILDING SERVED THE PEOPLE OF THE COOLAMON DISTRICT.

The building operated as a general store until 1932. The Store remains as a visual reminder of the ingenuity and skill of local architects, builders and retail traders and their staff.

The Store highlights its original fittings including the Lamson Cash Railway, which is the only known Ball-Style Cash Railway System in the world that is still in its original location. The Lamson Cash Railway System is a significant feature of retail history. Installed in the Coolamon Up-to-Date Store during the early years of Lamson's entry into Australian retail, the Cash Railway is an integral feature of the Store.

The Store is now home to a number of impressive collections and exhibitions:

Gullaman Collection

A significant collection of stone tools and cultural items sharing stories of the Wiradjuri People in the area.

The Mavis Furner Collection

An exquisite collection of over 200 crochet garments, accessories and photographs that interpret the life and experience of Mavis Furner and her work in the community of Coolamon.

The Garth Jones Collection

Coolamon's agricultural development is evident in this rare assortment of farm machinery, some in pristine condition. The accompanying photographs and story by Garth Jones himself is a personal history of working the land.

The Reg Godde Collection

Marvel at the imagination and craftsmanship of Reg Godde's miniature farm machinery, entirely created by one man!

You'll be greeted by passionate volunteers.
Free entry - Donations are welcomed

Our Shire, Our Stories

Listen to the stories capturing history and heritage of our community on vintage radios. This exhibition appreciates and celebrates the past, and the experiences and memories that create our community. You'll hear voices and recollections from local residents.

Coolamon RSL Museum

The museum leads you through five interconnected rooms from the Boer War to the present displaying memorabilia, photographs and documents. Located to the rear of the Coolamon Up-to-Date Store.

To arrange tour or group bookings, please phone 6927 2492

Located on Corner Cowabbie and Loughnan Street, Coolamon

For more information, visit www.visitcoolamonshire.com.au

COUNTRY Pubs

Explore wide verandahs, heritage architecture and great country hospitality. Pubs are the heart of small towns, packed with character.

Not only impressive buildings but a meeting place for locals and visitors, where many good stories start. When visiting the Coolamon Shire, you'll find striking pubs on corners spotted throughout our towns and villages. Guaranteed to enter a pub with a pool comp, darts, live bands or a meat raffle.

The pubs listed below all offer a relaxed country environment where you can enjoy a great meal and catch up with friends or meet a local. Call in and say G'day.

- Beckom Hotel
- Ganmain Hotel
- Marrar Hotel
- London Hotel Motel Ardlethan
- Royal Tavern Coolamon



FRANK BRADLEY *Sculpture*

A remarkable sculpture funded by the community of Ardlethan, Frank Bradley stands tall in Ardlethan. The sculpture recognises his achievement of winning the well-known Stawell Gift in 1937. Sculpture is located in Ariah Street, Ardlethan

For more information, visit www.visitcoolamonshire.com.au



GANMAIN *Hay Display Centre*

THE GANMAIN HAYSTACK MUSEUM IS AN OPEN DISPLAY AND CAN BE ACCESSED AT ALL TIMES.

The display includes a working binder, a mural, photographs and a variety of information panels. The newest addition to the museum is the touch screen monitor which displays old films and photos of “The hay industry glory days”.

For more information, please contact Advance Ganmain Committee, Bernadette Bodel on ph: 0417 482 976. Follow them on Facebook via @Ganmainhallandevents

Get social with the Hay Display Centre via @Ganmainhallandevents



GANMAIN *Historical Society Museum*

The origins of the Ganmain Historical Society date back to 1973 when, at a local clearing sale, six district people combined resources to buy an old harvester. They did this to ensure recognition of heritage agricultural equipment and other objects would not be lost.

These objects - and more importantly their

stories - are now on display for present and future generations. Step back in time and view a large collection which includes farming implements, household items, sporting and war memorabilia and a large archive of photographs and newspaper items.

ON THE SECOND LAST SUNDAY IN MARCH, THE MUSEUM HOSTS AN ANNUAL OPEN DAY. VISITORS CAN ENJOY A BLACKSMITH DEMONSTRATION, ROPE MAKING, OLD WOOD SAW, WORKING CLYDESDALES HORSE AND LOTS OF OTHER INTERESTING EXHIBITIONS.

Open Sunday from 11am and by appointment.

To book a tour, please contact Stu Winrow on 0429 931 249

For more information, visit www.visitcoolamonshire.com.au





Photo Credit - Cayley Tonacia

RECREATION AND *Nature*

TO KEEP ACTIVE AND VIEW THE GREAT OUTDOORS, COOLAMON SHIRE HAS A VARIETY OF ACTIVITIES AND SPACES TO KEEP YOU MOVING.

Impressive new facilities at the Coolamon Sport and Recreation Club offer golf, lawn bowls and tennis. These facilities include an 18 hole sandgreen, four synthetic tennis courts and ten synthetic bowling rinks. You'll also find facilities at the Ardlethan Bowling and Recreation Club and the Ganmain Sports Club.

A variety of bike and walking tracks including Kindra Forest Trail, Gilgai Trail, Coolamon Urban Trail and Ganmain's Murumbang Interpretive Walk. Cool off in summer at one of the three outdoor community swimming pools.

Kids will enjoy a visit to the Coolamon Skate Park, mobile Skate Park and the Pumptrack. These mobile devices rotate around the Shire landing on launchpads in smaller towns and villages.

You'll also find great parks and gardens for picnics and family fun, all offering playground equipment, BBQ facilities and toilets.

For more information, visit www.visitcoolamonshire.com.au



Eat and drink

COOLAMON AND ITS NEARBY VILLAGES OFFER A HIVE OF SPOTS TO PICK UP DELICIOUS MEALS, TREATS AND LOCALLY MADE ITEMS.

Throughout the Shire you'll find cafes, delightful bakeries and old-fashioned country pubs. Eat in or grab your food to take away, and enjoy a picnic or BBQ in one of the nearby parks. Indulge in homemade and handcrafted delights.

Coolamon Shire's eating out scene is fast growing with new cafes and eateries popping up all over the place.





ARDETHAN BOWLING AND RECREATION CLUB

The Club offers a friendly atmosphere, with great priced meals and drinks for members and guests.

Open Friday, Saturday, Sunday evenings from 5-9pm

29 Aria Street, Ardlethan NSW 2665

Ph: (02) 6978 2033



ARDETHAN EMPORIUM

COFFEE SHOP, NEWSAGENCY AND GIFTS

Located in Ardlethan's main Street, offering quick and tasty options for travellers or those wanting to dine in.

Open 7 Days

38-44 Aria Street, Ardlethan NSW 2665

Ph: (02) 6978 2040



ARIAH 62 CAFE

Coffee shop and café offering a range of menu options in a lovely family-friendly atmosphere.

Open Tuesday to Saturday

62 Aria Street, Ardlethan NSW 2665

Ph: (02) 6978 2010



BARTY'S CAFE

Providing tasty fish and chips. This is your typical take away go-to spot. Offering a large menu including burgers and sandwiches. Dine in or takeaway and enjoy in the park or plaza.

Open 6 Days from 4pm

109 Cowabbie Street, Coolamon NSW 2701

Ph: (02) 6927 3542



BECKOM HOTEL

Visit this historic country pub with great hospitality and relaxed atmosphere. This beautiful country pub oozes plenty of local charm.

Open 7 Days

Deakin Street, Beckom NSW 2665

Ph: (02) 6978 2313



CAFÉéGANMAIN

A great range of sweet and savoury items for breakfast and lunches. Pick up coffee, homemade treats and thickshakes you'll need a spoon for. Family friendly dining inside and out.

Open Thursday to Sunday

55 Lake Street, Ganmain NSW 2702



COOLAMON CHINESE RESTAURANT

(LOCATED IN COOLAMON SPORT AND RECREATION CLUB)

Number one choice for Chinese food. Offering a large range of delicious menu options.

Open Friday, Saturday and Sunday

71-73 Lewis Street, , Coolamon NSW 2701

Ph: (02) 6927 3552



COOLAMON PERK

Pick up amazing coffee and delicious meals for breakfast and lunch. Pies and sausage rolls made fresh daily. Open seven days a week, also serving freshly made wraps, sandwiches and cakes. A relaxed environment you can share with your friends and family.

Open 7 days.

Cowabbie Street, , Coolamon NSW 2701

Ph: 0459 523 399



COOLAMON SPORT AND RECREATION CLUB

Offers family-friendly atmosphere. Dine in the restaurant or join the locals for a drink at the bar. Offering delicious Friday night pizzas or grab a meal from the Chinese restaurant.

Open 7 Days

71-73 Lewis Street, , Coolamon NSW 2701

Ph: (02) 6927 3178



GANMAIN BAKERY

A friendly bakery serving fresh homemade breads, treats, and well known pies. Pick up a delicious 'Ganmain Pie'.

Open Monday to Saturday

105 Ford St, Ganmain NSW 2702

Ph: (02) 6927 6401



GANMAIN HOTEL

A family friendly country pub where you can enjoy meals within the beer garden, bar or takeaway. Located in a stunning two-story building on the corner of Ganmain's main street.

Open 7 days

Cnr Ford and Lake Streets, Ganmain NSW 2702

Ph: (02) 6927 6419



GANMAIN SPORTS CLUB

Offering a friendly venue that can cater for functions or a quiet drink.

Open Thursday – Saturday from 4pm. Bistro Open Friday & Saturday Nights.

1 Ford Street, Ganmain NSW 2702

Ph: (02) 6927 6193



LITTLE RUSTIC PANTRY

Serving delicious breakfast, lunch and treats from within the State Heritage listed Up-to-date Store. This space is also a beautiful event, function and wedding venue.

Open Thursday to Sunday

127-129 Cowabbie Street, Coolamon NSW 2701

Ph: 0499 184 927



LONDON HOTEL MOTEL

A great choice for your upcoming meal, the London offers traditional pub meals with a country pub atmosphere. Accommodation available.

Open 7 Days

12 Mirrool Street, Ardlethan NSW 2665

Ph: (02) 6978 2300



MARRAR CAFE AND GENERAL STORE

Offering a relaxed atmosphere with a tasty selection of burgers, sandwiches or traditional fish and chips. Also providing general store items.

Open 7 Days

York Street, Marrar NSW 2652

Ph: (02) 6927 4466



MARRAR HOTEL

The perfect quaint pub offering front bar, dining room and large beer garden. Enjoy a meal and drinks with friends and family.

Open 6 days. Monday- CLOSED | Bistro open Thursday-Friday-Saturday 6-8pm

13 York Street, Marrar NSW 2652

Ph: (02) 6927 4412



PAK GALLERY RESTAURANT

Located in the old wool sheds offering Pakistani food with its traditional taste, flavour and aroma in a beautifully renovated building.

Open 7 days

123 Cowabbie Street, Coolamon NSW 2701

Ph: 0466 643 721



ROYAL TAVERN COOLAMON

A welcoming place to have a beer with the locals and a hearty pub meal. The "Top Pub" offers great country hospitality. Offering high quality food at low prices, this venue is rocking with locals and visitors, providing an uplifting and friendly atmosphere.

Open 7 Days

90 Cowabbie Street, Coolamon NSW 2701

Ph: (02) 6927 3015





THE BREAD AND CHEESE – SYNERGY CAFE RESTAURANT

Enjoy a large variety of breakfast, lunch and dinner options in a large, open, renovated building. Supplying artisan products from both Steve's Bakery and the Coolamon Cheese Co, as well as other local produce.

Open 7 days per week from 8:30am - 4:00pm as a cafe, and as a restaurant from 6.00pm on Friday & Saturday nights.

87 Cowabbie Street, Coolamon NSW 2701

Ph: 0492 455 743



THE OLD CONVENT

Located in the beautifully restored St Michaels Convent, serving high tea and delicious scones.

Open weekends

56 Bruce Street, Coolamon NSW 2701

Ph: 0412 177 230



THE STATION COLLECTIVE

Located in Coolamon's historic train station, The Station Co is the perfect spot for coffee and a house made lunch. Sit on the platform or take a picnic to the park.

Open Friday-Sunday 8am-4pm

Railway Station, Coolamon NSW 2701

Ph: 0434 612 905







BRUSHWOODS

Because we care.

FRESH ROLLED OATS
250g

Ingredients: 100% Wholegrain Oats



Pure & Real

Brushwoods Australia



MAKERS, *Creators and Growers*

ALONGSIDE SOME OF THE RICHEST FARMLAND YOU WILL FIND SMALL BATCH BESPOKE BUSINESSES CREATING PRODUCTS YOU WON'T FIND ANYWHERE ELSE.

ANGELA'S STUDIO COOLAMON

One off pieces created in Angela's studio. Handmade Pottery, Ceramic Giftware & Garden Art.

Ph: 0428 273 525

BRUSHWOODS AUSTRALIA

Family owned farm producing quality oats and olive oil and stocking pantries right across Australia. Their products can be found in local shops around the Shire and online.

@brushwoodsaustralia
www.brushwoods.com.au

BEC CUTLER ARTIST

*From Nature To You
Every item is unique & handmade using paper, leather, natural textiles & hand foraged flora to create wearable art, functional items & artworks.*

@beccutlerartist

CLASSIC COUTURE VINTAGE AND BRIDAL

Celebrating the grace and poise of the feminine aesthetic by designing and creating garments to enhance and accentuate individual client's character and desires.

@classiccouturevintagebridal

GANMAIN GARLIC

Let's be honest, everything tastes better with garlic! Even better when it's grown locally in the rich red Ganmain soil. From farm fresh, smoked, pickled or preserved – Ganmain Garlic has you covered. Sold locally at the Ganmain Bakery and on farm.

Ph: 0428 276402
ganmaingarlic@outlook.com.au

MARITA MACKLIN BESPOKE EMBROIDERY

Embroidery and textile artist specialising in free-motion (Irish), Cornely and hand embroidery. Located in Coolamon's main street, you'll see some of Marita's work on display.

@maritamacklin
www.marita-macklin.square.site

STUDIO FARO

Studio Faro is a fashion design and pattern making studio that offers basic training and professional development workshops for the fashion enthusiast, industry practitioners and textile teachers.

@studiofaro
www.studiofaro.com

SNOWGUMHONEY APIARIES

*Straight from the hives.
Processed on a local family operated farm. Products are available to purchase from a variety of shops within Coolamon. It doesn't get any sweeter than that.*

Ph: 0427 272 294



Time to shop

PACKED WITH PLENTY OF DELIGHTFUL SHOPPING EXPERIENCES.

Ranging from antiques, boutiques, op shops and craft shops. You'll enjoy picking up one-off pieces, digging through secondhand shops full to the brim or picking up a handmade treasure. You'll find that perfect present for yourself or loved ones.



Fisher and Farmer



ARDLEE OUTBACK GIFTS

Old style store promoting local and homemade products from surrounding areas. Showcasing garden art, candles, soaps, salt and peppers, jams and sauces and so much more.

Open Thursday to Sunday

32b Ariah Street, Ardlethan NSW 2665

Ph: 0435 771 887



BALDO'S OLD WARES

Spanning across three separate shops Baldo's is everything an authentic junk shop should be, full to the brim with treasures. It's impossible to leave empty handed!

Open Saturday and Sunday and some Weekdays

Waterview Street, Ganmain NSW 2702

Ph: 0427 878 976



COOLAMON ART AND CRAFT SHOP

Browse handmade items made locally, from homemade jams and chutneys, sewing pieces, ceramics, plants and other handcrafted items.

Open 7 days

Cowabbie Street, Coolamon NSW 2701

Ph: 0427 008 344



COOLAMON OLD WARES AND COLLECTABLES

A diverse and wide range of items for any collector. Located in Coolamon's main street.

Open Thursday to Sunday

104 Cowabbie Street, Coolamon NSW 2701

Ph: 0429 955 019



COUNTRY GOODIES

Enjoy a range of locally produced goodies from honey, olive oils, jams, garden ornaments, baked goods, jewellery, cheese boards, candles and more.

Open 7 Days

95A Cowabbie Street, Coolamon NSW 2701

Ph: (02) 6927 3692



FARAWAY ON FORD

Well-read books and well-kept wares.

Open Friday and Saturdays from 10am to 3pm.
Open Thursdays from October to December.

95 Ford Street, Ganmain NSW 2702

Ph: 0405 014 773



FISHER AND FARMER

A unique collection of beautiful pieces for you and your home. A boutique full of giftware, clothing, jewellery, rugs, leather bags and plenty of things to love.

Open Thursday to Sunday

81-83 Ford Street, Ganmain NSW 2702

Ph: (02) 6927 6032



GANMAIN CRAFT COTTAGE

Home to a range of locally made and crafted items. Browse a large variety of fabric and sewing supplies. Stocking handmade blankets, clothing, tea towels and more.

Open Monday to Saturday

86 Ford Street, Ganmain NSW 2702

Ph: (02) 6927 6427



LILY MAUDE'S FLOWER SHOP AND ALL THINGS NICE

Local florist stocking a variety of fresh and dried arrangements. Lily's Maude's also offers a variety of gift ware options to accompany your arrangement. Custom orders available.

Open Tuesday to Sunday

100 Cowabbie Street, Coolamon NSW 2701

Ph: 0434 788 325



LUMELA COOLAMON

Unique homewares and gifts for every occasion. Browse the shelves of the little old house. It's what's on the inside that counts. Stocking a large range of items including jewellery, kids activities, leather goods, women's accessories and homewares.

Open Thursday to Sunday and public holidays

67 Cowabbie Street, Coolamon NSW 2701

Ph: 0416 213 057



PAK GALLERY

Showcasing *Made in Pakistan* products from the ancient land of Indus Valley Civilization.' Browse a beautiful display of items.

Open 7 Days

123 Cowabbie Street, Coolamon NSW 2701

Ph: 0466 643 721



PLATT'S SECONDHAND GOODS AND COLLECTABLES

A variety of goods and collectables, this large store will have you browsing for a while. Wander through a large collections of items.

Open Friday to Monday and Wednesdays
(Closed Tuesday & Thursday)

Cowabbie Street, Coolamon NSW 2701



RELLE'S RELICS

Some things old, some thing new. Located in Ardlethan's main street, Relle's Relics stocks clothing, jewellery, toys, dolls and more.

Open Thursday to Saturday

70 Ariah Street, Ardlethan NSW 2665

Ph: 0412 241 208



ROSE GOLD MAKE UP AND BEAUTY

A beautiful range of beauty products and giftware. The perfect way to spoil someone special

Open Tuesday to Friday

117 Cowabbie Street, Coolamon NSW 2701

Ph: 0438 547 746



RUSTIC ROSE GALLERY

Quality handcrafted furniture and homewares, a large selection of wall and garden art. View in store or contact for custom orders.

Open 7 Days

121 Cowabbie Street, Coolamon NSW 2701

Ph: 0427 242 105



SOMERSET ROSE JEWELLERY BOUTIQUE

*Jewellery boutique and all things special
Stocking unique 9ct gold and sterling silver jewellery!*

Open Tuesday to Sunday

91-93 Cowabbie , Coolamon NSW 2701

Ph: 0427 227 968



THE SILL

*Specialising in living decor.
Offering a wide selection of pots, planters, baskets and indoor greenery,
because every room deserves a plant.*

Open Friday, Saturday and Sunday

Located in the heritage Coolamon Railway Station, Ph: 0428 273 450
Coolamon NSW 2701



TREATS AND TREASURES

*Vintage collectables, memorabilia, antiques and gifts. Browse shelves full of
unique one-off treasures.*

Open Friday, Saturday & Sunday

114 Cowabbie Street, Coolamon NSW 2701

02 6927 3422

www.treatsandtreasures.com.au

0428 694448



YOU AND ME PLANTS AND GIFTWARE

*Stocking a range of succulents and live planters plus a range of giftware. Located
in Coolamon's main street.*

Open Saturday and Sunday

98 Cowabbie Street, Coolamon NSW 2701

youandmeplants@gmail.com



Events

COOLAMON SHIRE OFFERS A RANGE OF EVENTS THAT ARE VIBRANT AND FUN.

Feel like spending some time in a region that is packed with events showcasing heritage, arts, culture, sport and community. When planning your visit, be sure to check our annual events calendar before locking in your trip.



WHAT'S ON THIS YEAR?

JANUARY

Australia Day Celebrations

FEBRUARY

Ganmain Triathlon

Gourmet Ganmain

MARCH

Ganmain Historical Society
Open Day

Ardlethan Picnic Races

Coolamon Carnival of Cups

Riverina Antique Bottles and
Collectables Fair

APRIL

Ardlethan Country Music
Festival

Coolamon Rotary Easter
Markets

Up2Date Art Challenge

Swap Meet and Market Day

Anzac Day Services

MAY

Marrar Campdraft

The Ardlethan Art Prize

JULY

Coolamon Up2Date Art
Exhibition

AUGUST

Ganmain Show

SEPTEMBER

Ardlethan Show

OCTOBER

Coolamon Fire Muster

Coolamon Whole Town
Garage Sale

Ganmain Twilight Markets

NOVEMBER

Capture Coolamon Shire
Photographic Exhibition

DECEMBER

Christmas Carols

Coolamon NYE Street Festival

This is a selection of annual events over the year, please visit www.visitcoolamonshire.com.au for full event listings. **Please note events may change from year to year.**





Coolamon NYE Street Festival





Stay a While

REST ASSURED YOU WILL BE SLEEPING IN A REGION FILLED WITH CHARM AND HOSPITALITY.

Choose from a wide range of accommodation including self-contained, bed and breakfast, motel, hotel, camping and caravanning.

You'll find accommodation choices for every type of traveller and budget. Whether you're looking for affordable accommodation, something for the family or a couples retreat, you are bound to find something to suit.



Sweet Briar B&B



ARDLETHAN SHORT STAY FACILITIES

The perfect rest spot, travellers are guaranteed a peaceful stay at Ardlethan's short-stay park for caravans and motorhomes.

Please visit www.visitcoolamonshire.com.au for more details

Ariah St, Ardlethan NSW 2665



COOLAMON CARAVAN PARK

Located in close proximity to Coolamon's main street. The park is surrounded by Redgrave Park, swimming pool and community garden. The Caravan Park is within easy walking distance to many services and facilities. Travellers have access to fully powered caravanning and camping sites, BBQ facilities, camp kitchen and other amenities.

Please call to make a booking

70 Bruce Street, Coolamon NSW 2701

Ph: 0417 610 946

coolamoncaravanpark@coolamon.nsw.gov.au
www.visitcoolamonshire.com.au



COOLAMON MOTEL

Opened in 2007, the first motel in Coolamon is located within walking distance of the main street, hotels, parks and the Coolamon Sport & Recreation Club

Please call to make a booking

69 Cowabbie Street, Coolamon NSW 2701

Ph: (02) 6927 2200

stay@coolamonmotel.com.au
www.visitcoolamonshire.com.au



GANMAIN HOTEL

The peaceful ambience of the Ganmain Hotel welcomes guests looking for the ideal weekend 'get away'. Play golf, reconnect with nature or visit the district's museums.

Open 7 Days

98 Ford Street, Ganmain NSW 2702

Ph: (02) 6927 6419



KINDRA APARTMENTS

The building was constructed around 1903 and features 4.5m high pressed metal ceilings and a three-way fireplace. The accommodation consists of two fully-furnished apartments. These may be rented together or separately and can sleep up to 10 people all up. Each apartment has an enclosed courtyard to relax in and pets are most welcome.

Please call or email to make a booking

73 Bruce Street Coolamon NSW 2702

Ph: (02) 6927 2838

0427 290 565

Kindraapartmentscoolamon@gmail.com

www.kindraapartmentscoolamon.com.au



SWEET BRIAR BED AND BREAKFAST

The former Bank of NSW building built in 1887 captures the grandeur, style and romance of a by-gone era. Offering three beautiful bedrooms with full ensuite, a guest room, breakfast room and two self-contained country style cottages. The cottages overlook a pretty courtyard with manicured gardens and lawns.

Please call or email to make a booking

enquiry@sweetbriar.com.au

www.sweetbriar.com.au

131 Cowabbie Street, Coolamon NSW 2702

Ph: (02) 6927 2222



THE LONDON HOTEL MOTEL

The London Hotel is a family friendly hotel. Welcoming sporting clubs, car and bike enthusiast clubs with ample off street parking to accommodate trucks, buses and vans.

Please call to make a booking

12 Mirrool Street, Ardlethan NSW 2665

Ph: (02) 6978 2300

www.london-hotel.com.au

londonhotel@optusnet.com.au

THE Canola Trail



THE CANOLA TRAIL ALLOWS YOU TO EXPLORE AND INDULGE AT YOUR OWN PACE, TAKING IN THE SHIRES OF COOLAMON, JUNEE AND TEMORA.

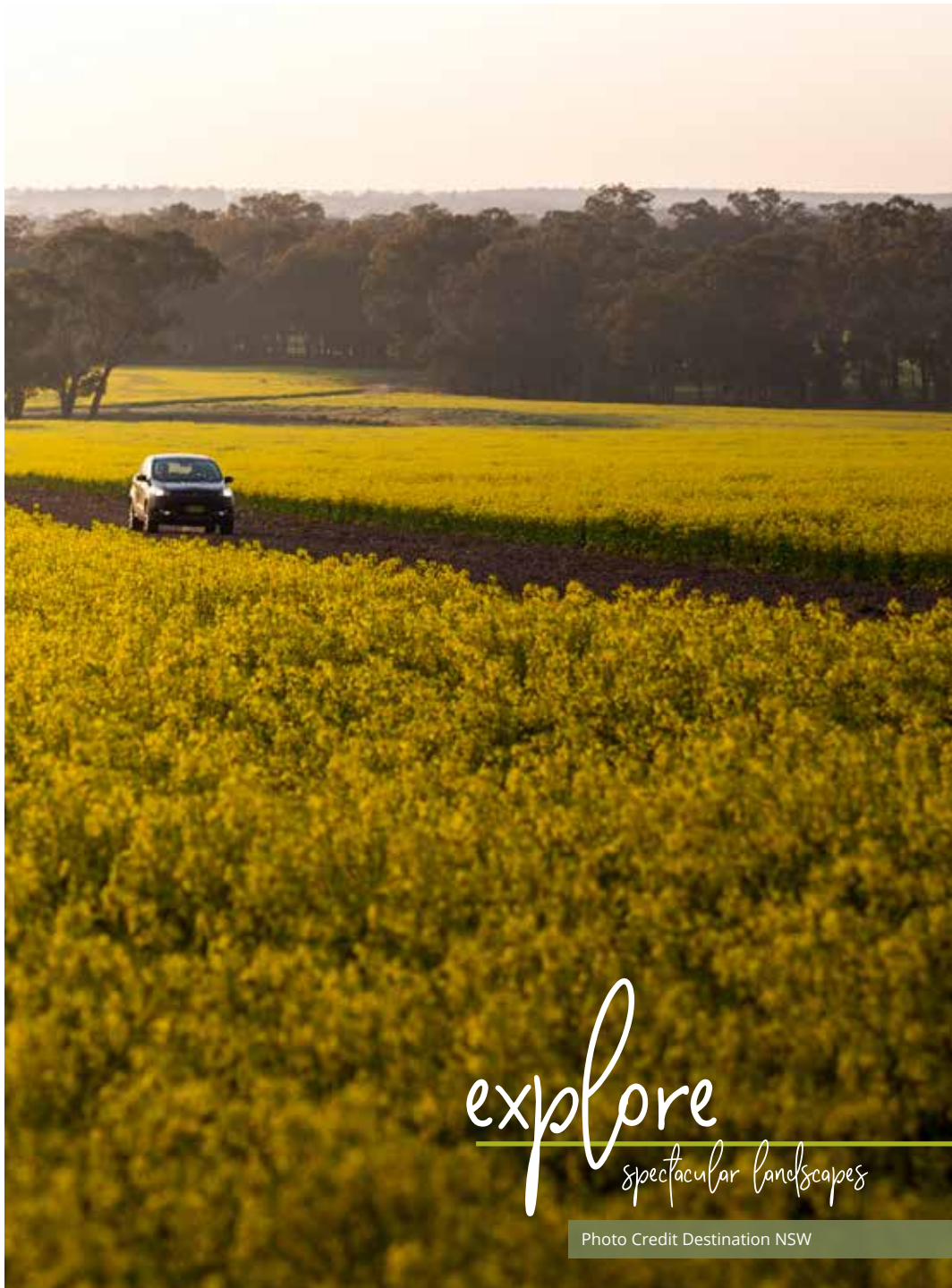
The trail will immerse you in the story of each Shire and its people. Follow the trail through the charming towns and quaint villages, overflowing with hidden gems that are waiting to be found. The Canola Trail can be travelled in a day, or take your time and stay a while. You'll discover our people, local businesses, attractions, places to stay, things to see and do and places to dine.

During spring you'll find stunning yellow canola fields, you too can enjoy these views while cruising around the region. From late August, through to October are generally the best times to see the golden fields so grab your friends and family and start planning your next Canola Trail adventure.

Visit www.canolatrail.com.au for more attractions, places to visit, accommodation and suggested itineraries.



Photo Credit Michael Reid



explore
spectacular landscapes

Photo Credit Destination NSW



Temora Aviation Museum

OUR NEIGHBOURS & THE *Riverina Region*

THE PERFECT OPPORTUNITY TO EXPLORE AROUND THE RIVERINA REGION – STAY A WHILE AND DISCOVER WHY WE LOVE IT HERE.

Coolamon Shire is ideally situated just a short detour or drive from the Olympic, Newell and Sturt Highways. This not only gives you easy access to all towns and villages within the Shire, but also our friendly neighbours. The City of Wagga Wagga and Shires of Junee, Temora, Narrandera and Bland surround Coolamon Shire and make for a great visitor experience.

The Riverina region boasts a variety of wonderful places to visit and people to meet. Offering many natural wonders and outdoor experiences, delicious meals, wineries and breweries, attractions and heritage and cultural experiences. Visit www.riverina.com.au to help plan your next trip to the Riverina.



Lake Talbot, Narrandera



Junee Licorice and Chocolate Factory



Photo Credit Owen Hawthorn

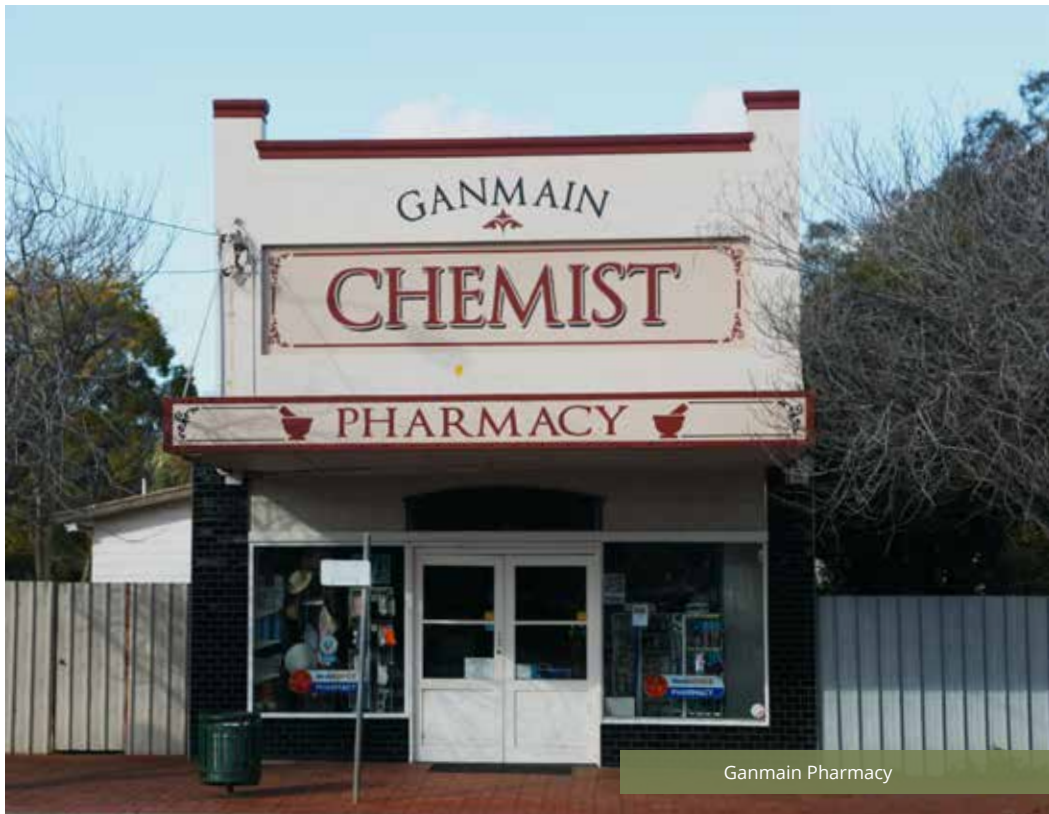
FACILITIES & *Services*

A VARIETY OF SERVICES AND FACILITIES ARE AVAILABLE THAT YOU MIGHT NEED WHEN TRAVELLING.

- Supermarkets and butchers
- Medical and dental services
- Pharmacies
- Fuel and mechanical repairs
- Beauty and hair services
- Post Offices

FREE WIFI IS AVAILABLE AT THE COOLAMON SHIRE LIBRARY.
129 COWABBIE STREET COOLAMON

Coolamon Shire is a pet friendly destination.
We encourage you to travel with your four-legged family members.



Ganmain Pharmacy



Photo Credit Destination NSW



VISIT
coolamon shire

CONTACT US!

PH: 02 6930 1800

E: HELLO@VISITCOOLAMONSHIRE.COM.AU

55 COWABBIE STREET COOLAMON, NSW 2701

WWW.VISITCOOLAMONSHIRE.COM.AU